



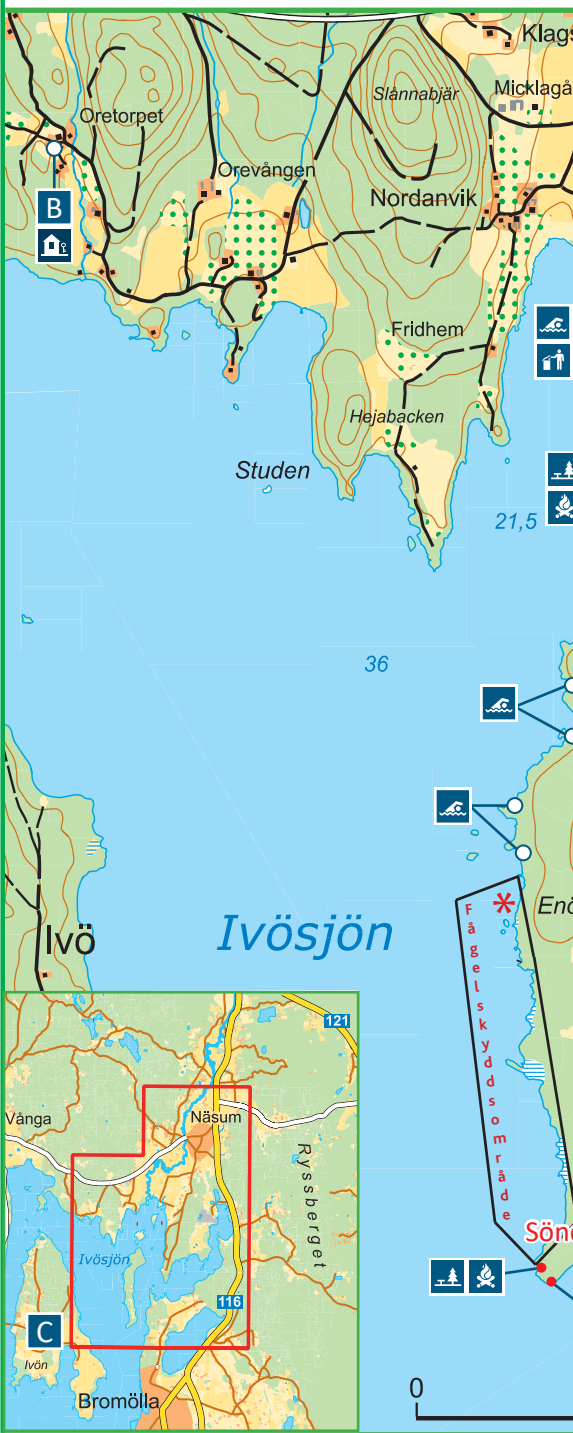
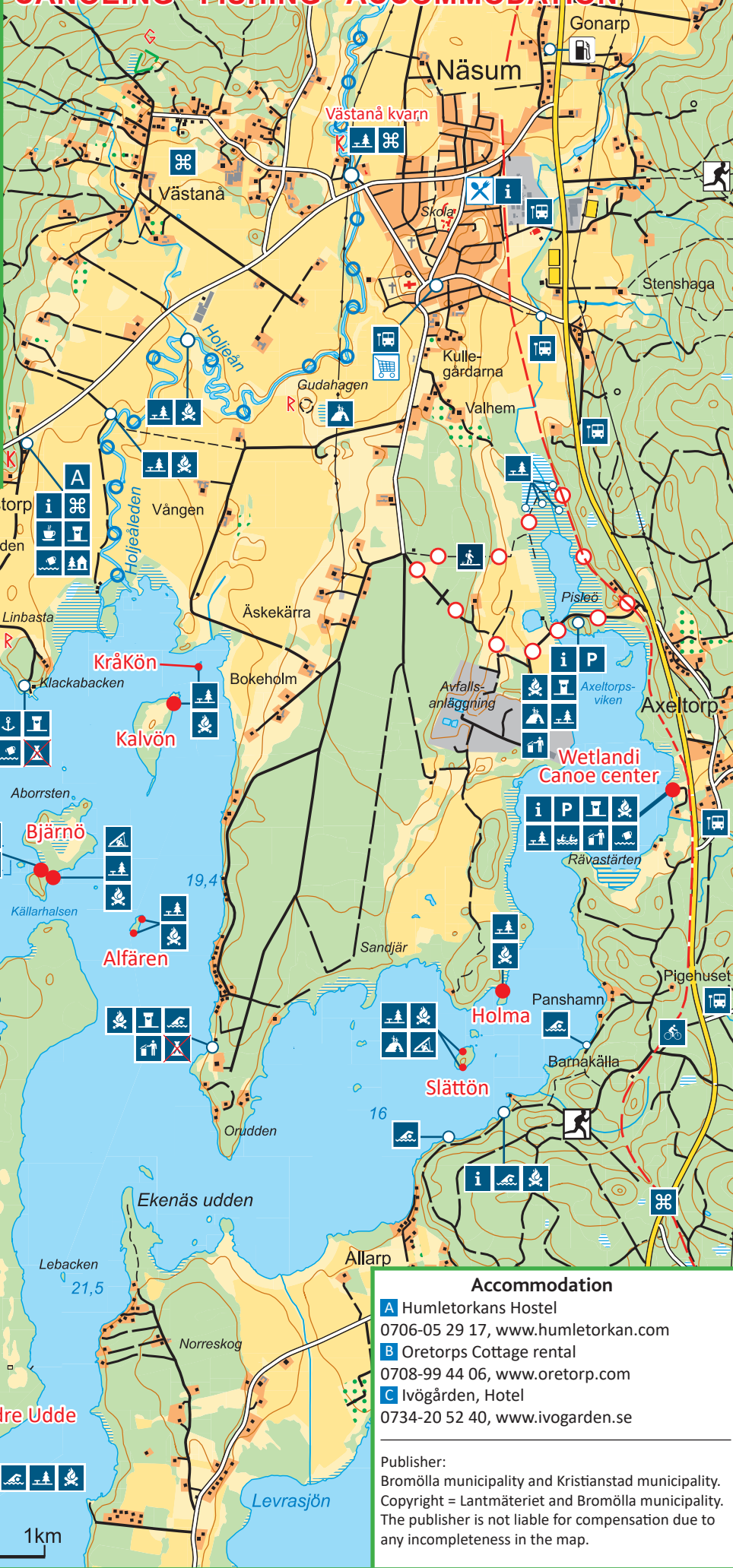
ARCHIPELAGO IVÖSJÖN

CANOEING - FISHING - ACCOMMODATION



-  Informationstavla
Information board
-  Affär
Shop
-  Badplats
Bathing site
-  Busshållplats
Busstop
-  Café
Café
-  Café
Café
-  Cykelled
Cycle path
-  Dricksvatten
Drinking water
-  Drivmedel
Filling station
-  Grillplats
Barbeque site
-  Kanotled
Canoe trail
-  Kanotuthyrning
Canoe hire
-  Lägerplats
Camp
-  Matställe
Café, restaurant
-  Motionsspår
Running trails
-  Parkering
Car park
-  Rastplats
Picnic site
-  Sevärdhet
Place of interest
-  Småbåtshamn
Marina
-  Soptunna
Trash can
-  Stuguthyrning
Cottages for hire
-  Toalett
Public convenience
-  Utsiktsplats
Viewpoint
-  Vandrarhem
Youth Hostel
-  Vandringssled
Trail
-  Vindskydd
Windshield

Turistinformation / Tourist information
 Bromölla Turistinformation +46 (0)456 82 22 22, www.visitbromolla.se
 Kristianstad Turistinformation, www.kristianstad.se/turism
 Wetlandi, Axeltorp nature resort, +46 (0)44-961 00, www.wetlandi.se



Accommodation

- A** Humletorkans Hostel
0706-05 29 17, www.humletorkan.com
- B** Oretorps Cottage rental
0708-99 44 06, www.oretorp.com
- C** Ivögården, Hotel
0734-20 52 40, www.ivogarden.se

Publisher:
 Bromölla municipality and Kristianstad municipality.
Copyright = Lantmäteriet and Bromölla municipality.
 The publisher is not liable for compensation due to any incompleteness in the map.

Wetlandi Campsites

If you've ever dreamed of living like Robinson Crusoe on an uninhabited island, the campsites below are for you. Customers of Wetlandi may use these sites free of charge, for one or more nights, regardless if you have one tent or come as a group. Other groups and non-Wetlandi customers must contact Wetlandi for approval prior to setting up camp.

Campsite names, and recommended number of campsites/tents per site:

- Alfären, 2 Campsites. North side - Small groups. South side - Single tents
- Bjärnö, 2 Campsites. East side - Large groups. West side - Single tents
- Holma, Single tents. Please note: Camping west of the campsite next to the cottages is strictly prohibited!
- Kalvön, Large groups.
- Kråkö, Single tents
- Slättön, 2 Campsites. South side - Large groups. North side - Small groups.
- Söndre udde, 2 Campsites. North side - Single tents. South side - Small groups. Please note: Landing is prohibited in the bird protection area noted on the map.

Each campsite has a firepit, picnic table, information signs and a latrine shovel. On Bjärnö and Slättö there are also permanent wind shelters.

Waste disposal

Each visitor is responsible for ensuring that the camping area is left clean and tidy. By law, all waste must be removed and taken with you. Wetlandi customers can dispose of their waste at the Company Centre in Axeltorp. Please ensure waste is sorted and properly disposed of in the right bins; metal, glass and combustible waste.



Fishing

For all types of fishing, in all areas, a fishing permit is required. Fishing rules, and instructions on how to purchase fishing permits can be found at www.ivosjon.se or use the QR-code below. Permits and depth maps can also be found for sale at different spots along the lake. Please respect the fishing prohibition in the area between 'Ekenäs udde' and 'Rävastärten' from May 1st to June 15th.

"There's only one Ivösjön, take care of it!"



QR-code - purchase fishing permits

Nature trails

There are several hiking, paddling and bicycling trails in the area. For more information- visit www.humleslingan.com, or contact Bromölla tourist information. You can also find maps and information about the different trails at Wetlandi's resort.



The right of Public access (Allemansrätten)

Allemansrätten allows anyone to travel freely and enjoy the countryside. However, the right of public access includes certain obligations; you must always behave with respect, consideration and a sense of responsibility.

Here are some basic rules to follow:

- Do not litter!
- Do not cross or trespass on another person's land or property.
- Do not walk over fields containing crops or damage any crops.
- Do not rest or swim at any private docks or within close range of private buildings.
- Pitching a tent in the public countryside for one night is allowed, as long as it's not on private property, crop/livestock fields or damaging to nature. However, you may not camp for more than 24 hours at the same location or pitch a tent near a private home.
- Allemansrätten does not apply to groups of people. Groups should only set up camp at authorized campsites. Groups not booked through Wetlandi must contact either Wetlandi or the land owner before setting up camp.
- To make a fire, you may only use fallen and dead branches as fuel, or bring your own firewood. Cutting down trees or damage trees is a chargeable offense.

Making a fire, Observe!

Fires are only allowed in dedicated firepits. Use good judgement to minimize risks. Always make sure that you have a large amount of water on hand to put out the fire. Fires must be properly and fully extinguished with water before leaving the campsite- do not use sand. Please respect all fire bans. You can usually find the current conditions and information about fire bans in the local newspapers. You are also welcome to ask the staff in the reception of Wetlandi.



The bird life and conservation area of Ivösjön.

There is an abundance of bird life in and around Ivösjön. The western area of 'Enö' is prohibited for entry between February 1st and August 31st (see marked area on map). Please respect the countryside and prohibited areas, this will help us preserve Ivösjön's bird life!

In case of accident or fire, contact SOS - Dial 112

